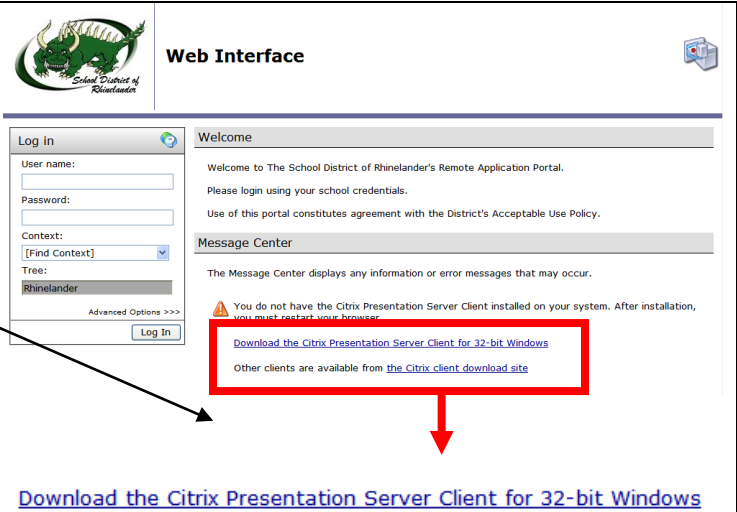


# Citrix / NFUSE Remote Access

## Citrix – Accessing your files at home

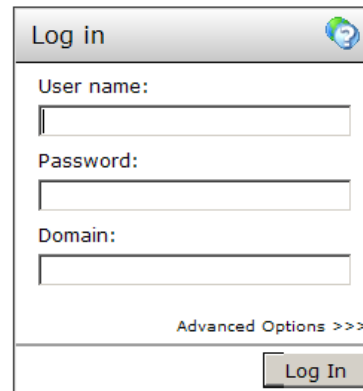
- Open up your browser.
- Type in the following URL:  
<https://citrix.rhineland.k12.wi.us/> or find the link on the SDR webpage under students and/or staff.
- If this is the first time using Citrix, you will need to download and install the Client.
- Click on the link to download the Citrix client
- Click on **Save** to download.
- After downloading is complete find the downloaded file on your computer and install the client.



The screenshot shows the 'Web Interface' for the School District of Rhineland. It features a 'Log in' section with fields for 'User name', 'Password', 'Context' (set to 'Rhineland'), and 'Tree'. A 'Log In' button is present. To the right, a 'Welcome' message is displayed. Below that, a 'Message Center' section contains a warning icon and text: 'You do not have the Citrix Presentation Server Client installed on your system. After installation, you must restart your browser.' A red box highlights a link: 'Download the Citrix Presentation Server Client for 32-bit Windows'. Below the box, another link is visible: 'Other clients are available from the Citrix client download site'. At the bottom of the page, a larger link is shown: 'Download the Citrix Presentation Server Client for 32-bit Windows'.

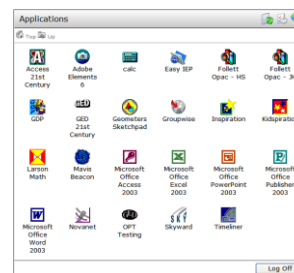
- After the client is installed, close your browser and reopen it.
- (If it still says that you do not have the client installed it should still work.)
- Go to <https://citrix.rhineland.k12.wi.us/> (You may want to add this link to your favorites)

- Login with the following credentials:
- Username: Use your login name
- Password: Use your password
- Domain: SDR



The screenshot shows a 'Log in' form with three input fields: 'User name:', 'Password:', and 'Domain:'. Below the fields is a link for 'Advanced Options >>>' and a 'Log In' button.

- After logging in, you will get a list of applications that you can run. You only need to single-click on the application icons to run them.
- When finished, close your application windows and click the Logout button on the NFUSE screen.



### Tips to remember:

- Don't forget to type in SDR in the domain field.
- Depending on the browser you are using or your security settings it may ask you to save and/or run a launch.ica file. If you get the option to just run the file do this otherwise save the launch file and then double click on the file to run the application.
- It may take a long time to open up an application the first time. Be patient and it will eventually load.
- When you are composing a longer email in Groupwise it may time out so you may want to save the draft often or type it up in Word and then paste it in the email message.
- The Citrix environment is not set up to replicate every application and drive on the network so not all drives will be available. Your I drive will be available.

## *Citrix / NFUSE Remote Access*